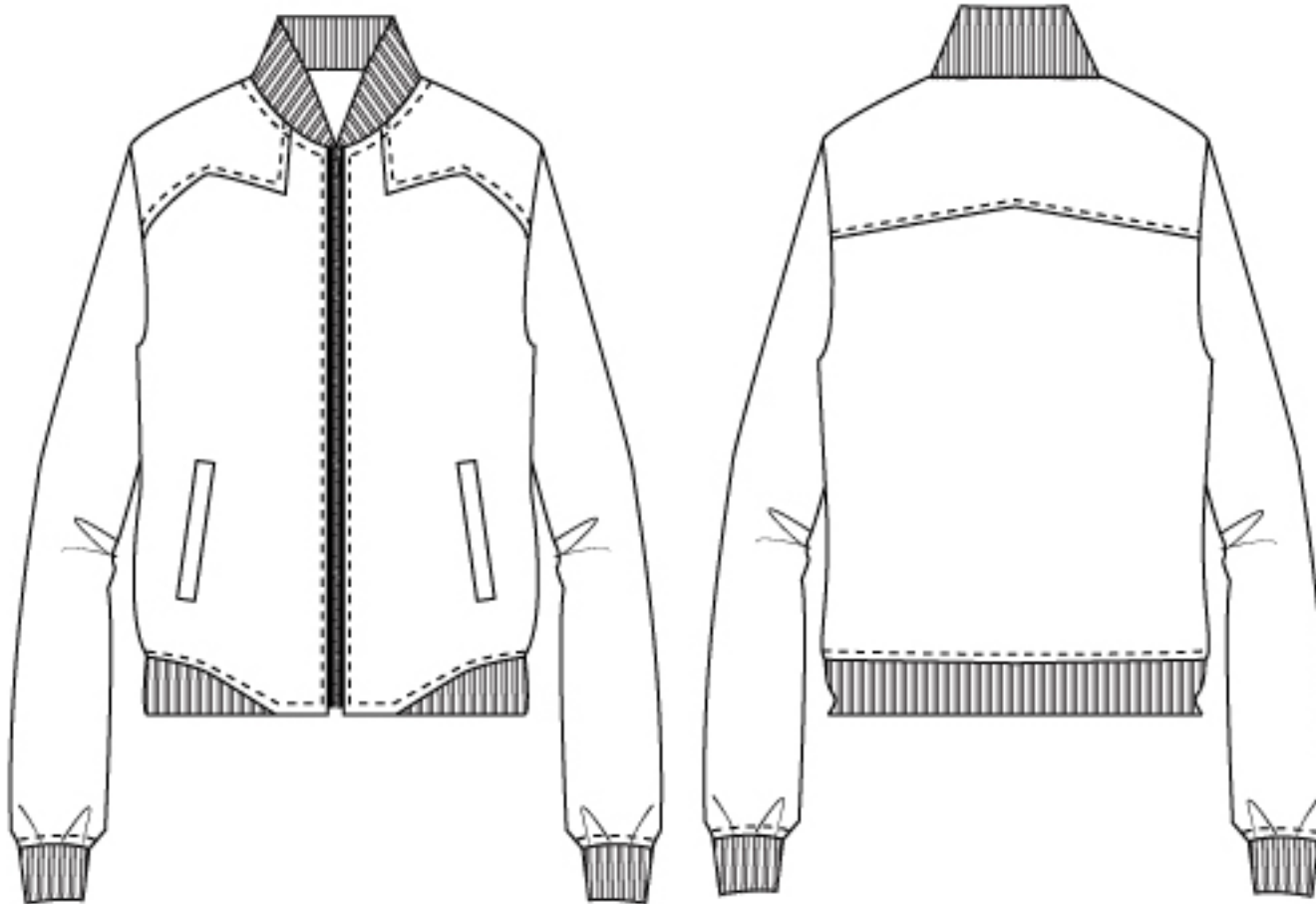




Customer Name	BAGATELLE	Customer Style#		Pattern#	BF54484	Style#	
Factory	CSL	SUBMIT NEW DEVELOPMENT					
Skin/Fabric Type	SEE BOM	Article#	CSL044112	Description	PU BOMBER JACKET		
Skin Grade	SEE BOM	Dev. Sample Size	S	Size Range		DATE	4/19/16
Skin/Fabric Supplier	SEE BOM	Fit Sample Size		CREATED BY	TONI	FIT STATUS	APPROVED/NOT APPROVED




BAGATELLE: Jacket

BOM - Technical Package

Customer Name	BAGATELLE	Customer Style#	0	Pattern#	BF54484	Style#		
Factory	CSL	SUBMIT NEW DEVELOPMENT						
Skin/Fabric Type	SEE BOM	Article#	CSL044112	Description	PU BOMBER JACKET			
Skin Grade	SEE BOM	Dev. Sample Size	S	Size Range	0			
Skin/Fabric Supplier	SEE BOM	Fit Sample Size	0	CREATED BY	TONI	FIT STATUS	APPROVED/NOT APPROVED	

DATE UPDATED:		04/19/16	ALL METAL ACCESSORIES (ZIPPERS, ZIP PULLERS, SNAPS, BUCKLES, STUDS, RIVETS, D-RINGS, EYELETS, HOOK AND EYE, METAL BUTTONS, GROMMETS) MUST HAVE ANTI RUST/ANTI TARNISH FINISH.						
SKIN/FABRIC		PHOTO	PLACEMENT	PCS	SIZE	COLORWAY 1	COLORWAY 2	COLORWAY 3	COLORWAY 4
MAIN 1:	PU		ALL OVER BODY, SLEEVES			ROSE GOLD			
Article#	CSL044112								
Supplier:	CSL								
MAIN 2:	2X1 RIB KNIT WITH STRETCH		COLLAR , CUFF , SWEEP			DTM			
Article#	SAME AS BC54293								
Supplier:	CSL								
MAIN 3:									
Article#									
Supplier:									
LINING 1:									
Article#									
Supplier:									
TRIMS		PHOTO	PLACEMENT	PCS	SIZE	COLORWAY 1	COLORWAY 2	COLORWAY 3	COLORWAY 4
ZIPPER:	METAL ZIPPER		CF	1	5	FINISH	FINISH	FINISH	FINISH
Article#	TBA					ROSE GOLD			
Supplier:	CSL SOURCE					TAPE COLOR	TAPE COLOR	TAPE COLOR	TAPE COLOR
						DTM			
THREAD:	EMBROIDERY/PICK STITCH								
Article#									
Supplier:									

Customer Name	BAGATELLE	Customer Style#	0	Pattern#		Style#			
Factory	CSL	SUBMIT NEW DEVELOPMENT							
Skin/Fabric Type	SEE BOM	Article#	CSL044112	Description					
Skin Grade	SEE BOM	Dev. Sample Size	S	Size Range	0				
Skin/Fabric Supplier	SEE BOM	Fit Sample Size	0	CREATED BY	TONI	FIT STATUS	APPROVED/NOT APPROVED		

BAGATELLE BL03 - LABELS & PLACEMENT

DATE UPDATED: 04/19/16



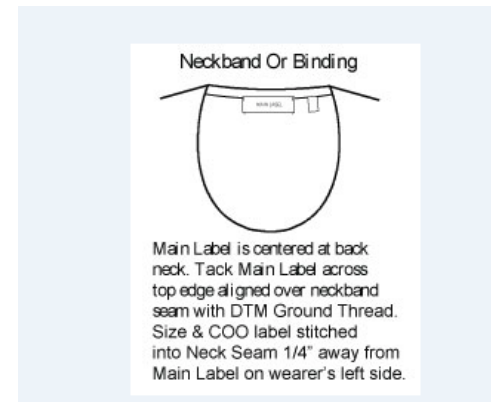
A) MAIN LABEL

SUPPLIER : STELLA (CSL)




SIZE, COO LABLE - CLEAR

B)SUPPLIER : CSL (STAGE LEATHER)

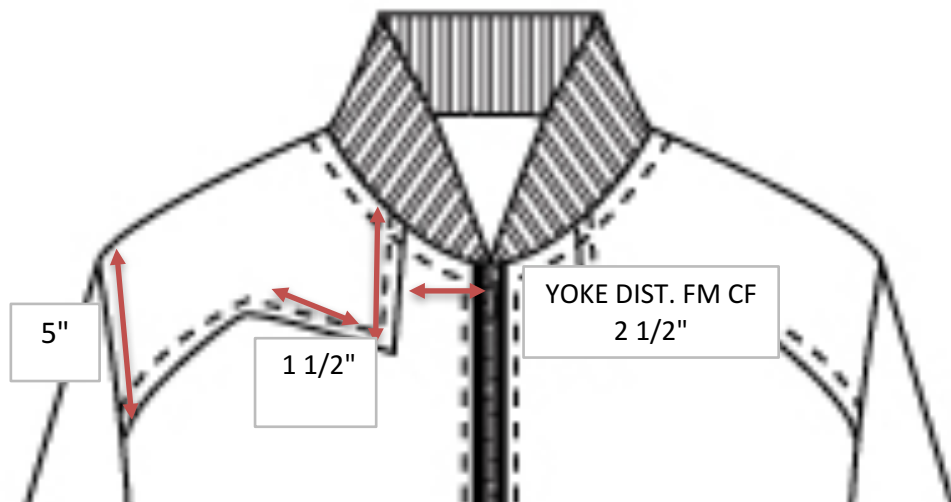


GREY GROUND W/WHITE WORDS

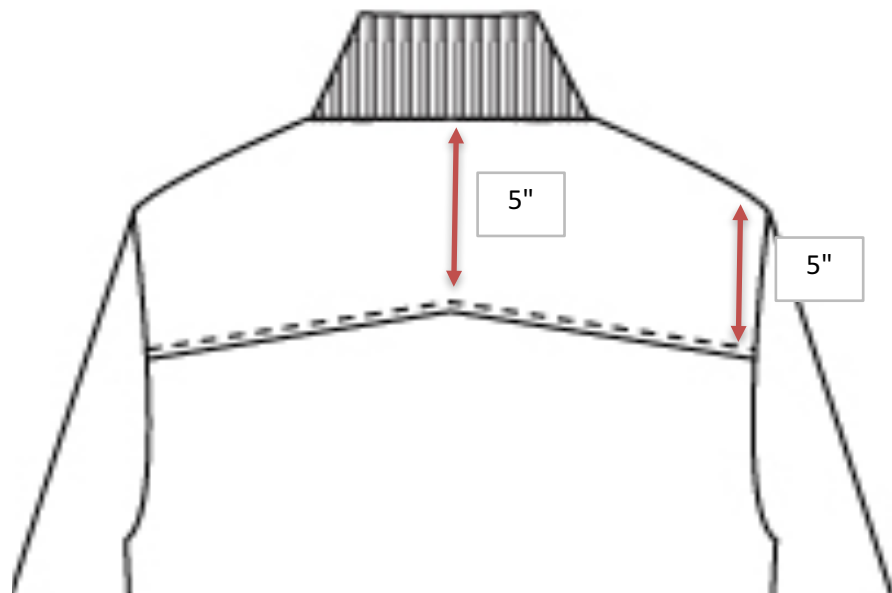
MUSTG MATCH WITH ALL LABELS/HANGTAG COLOR)


Customer Name	BAGATELLE	Customer Style#	0	Pattern#	BF54484	Style#	0		
Factory	CSL	SUBMIT NEW DEVELOPMENT							
Skin/Fabric Type	SEE BOM	Article#	CSL044112	Description	PU BOMBER JACKET				
Skin Grade	SEE BOM	Dev. Sample Size	S	Size Range	0				
Skin/Fabric Supplier	SEE BOM	Fit Sample Size	0	CREATED BY	TONI	STATUS	APPROVED/NOT APPROVED		

GARMENT DETAILS:

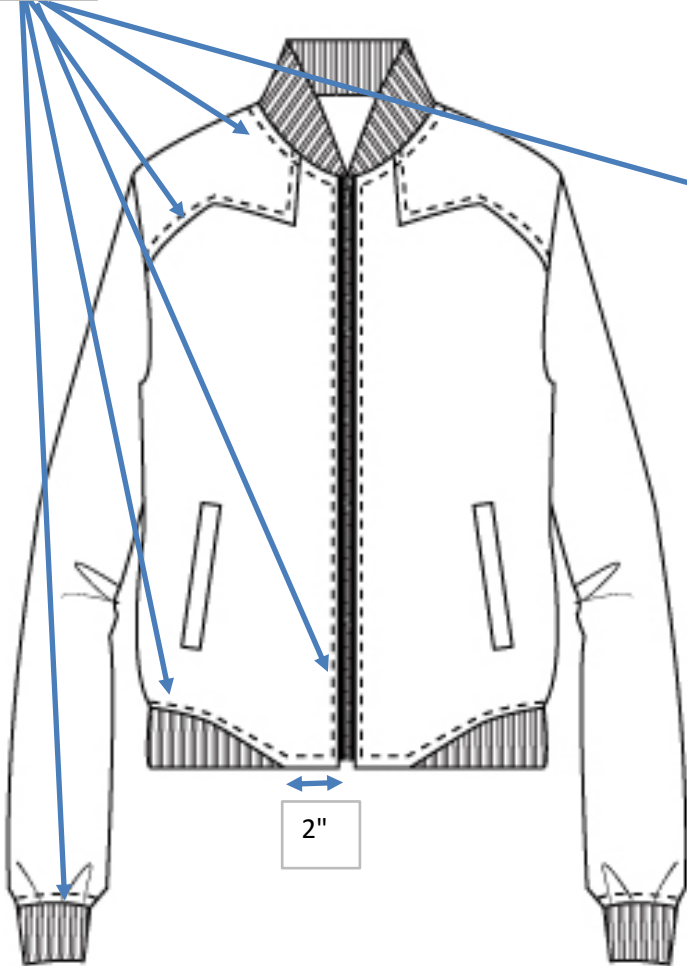


BESIDES THE YOKE, PLEASE USE
BC54293-86332 AS REFERENCE
 FOR OVERALL BODY

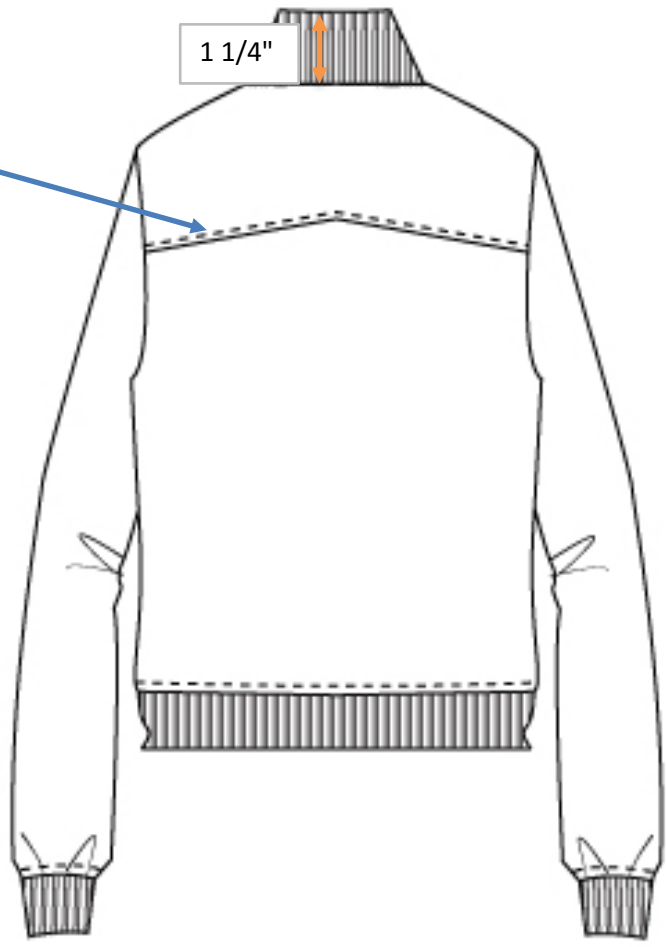


Customer Name	BAGATELLE	Customer Style#	0	Pattern#	BF54484	Style#	0		
Factory	CSL	SUBMIT: NEW DEVELOPMENT							
Skin/Fabric Type	0	Article#	0	Description	PU BOMBER JACKET				
Skin Grade	0	Dev. Sample Size	S	Size Range	0				
Skin/Fabric Supplier	0	Fit Sample Size	0	CREATED BY	TONI	STATUS	0		

1/4"
SNTS



1 1/4"



Customer Name	BAGATELLE	Customer Style#	0	Pattern#	BF54484	Style#	0
---------------	-----------	-----------------	---	----------	---------	--------	---

Factory: CSL **SUBMIT NEW DEVELOPMENT**



Skin/Fabric Type	SEE BOM	Article#	CSL044112	Description	PU BOMBER JACKET
Skin Grade	SEE BOM	Dev. Sample Size	S	Size Range	0
Skin/Fabric Supplier	SEE BOM	Fit Sample Size	0	CREATED BY	TONI

POINT OF MEASUREMENTS	TOL. +/-	Meeting SPEC	1ST FIT RCVD	DIFF SPEC	REVISED SPEC	DATE COMMENTS	2ND FIT RCVD	DIFF SPEC	REVISED SPEC	DATE COMMENTS	PPS RCVD	DIFF SPEC	REVISED SPEC	DATE COMMENTS	TOP SPEC
			SPO#				SPO#				SPO#				

CF Zipper Length	0"		PLS ADV	#####				0				0				
Shoulder Seam Forward	0"		1/2	1/2				0				0				
Shoulder Slope (from HPS)	0"		2	2				0				0				
CB Length (from CB Neck Edge / Seam)	1/4		21	##				0				0				
Front Body Length (from HPS)	1/4		22	##				0				0				
Across Shoulder	1/4		15 1/2	#####				0				0				
Across Back: 5" down fr HPS	1/4		16	##				0				0				
Across Front: 5" down fr HPS	1/4		15	##				0				0				
Across Front: 5" down fr HPS - HALF ONLY	1/8			0				0				0				
Bust Circumference (1" below AH Seam)	1/2		42	##				0				0				
Bust - Front Half (1" below AH Seam)	1/8			0				0				0				
Bust Back Only (1" below AH Seam)	1/4			0				0				0				
Waist Placement (from HPS)	1/8			0				0				0				
Waist Circumference	1/2			0				0				0				
Waist Front Only - Half	1/8			0				0				0				
Waist Back Only	1/4			0				0				0				
High Hip 3" below Waist	1/2			0				0				0				
Low Hip 7" below Waist	1/2			0				0				0				
Sweep Circumference (Straight - RELAXED)	1/2		34	##				0				0				
Sweep Circumference (Straight - STRETCHED)	1/2		44	##				0				0				
SWEEP RIB HEIGHT (EDGE - SEAM)	1/8		2 1/4	2 1/4				0				0				
Sweep - Back Only	1/4			0				0				0				
AH Circumference (Along Edge/Seam)	1/4		19 3/4	#####				0				0				
AH Placement (from HPS) **REF. ONLY**				0				0				0				
Sleeve Length (from shoulder Seam)	1/8		25	##				0				0				
SLEEVE CUFF HEIGHT (EDGE - SEAM)	1/8		2 1/4	2 1/4				0				0				
Bicep Circumference (1" below AH)	1/4		13	##				0				0				
Elbow Circumference (8" below AH)	1/4		12 1/2	#####				0				0				
Slve Opening Circumference (Straight - RELAXED)	1/8		8	8				0				0				
Slve Opening Circumference (Straight - STRETCHED)	1/8		13	##				0				0				
NK Width (edge to edge or seam to seam)	1/8		6 3/4	6 3/4				0				0				
Front NK Drop (from HPS to Edge)	1/8		3 3/4	3 3/4				0				0				
Back NK Drop (from HPS to Edge)	1/8		1/2	1/2				0				0				
CB YOKE HEIGHT	0"			0				0				0				

